

## Digital Colour Doppler System



### More Advanced. More Powerful.

- 12 inch high resolution LED monitor with tilt facility of 30° degree
- Standard 2 probe connectivity for ease of use.
- Broadband Multi-Frequency probes
- Full digital Multi-Beam forming technology.
- Speckle Reduction Imaging
- Multiple Compound Imaging (MCI)
- Trapezoid Imaging.
- i-Image (Intelligent Image Optimization)
- Full screen display
- Windows based system which support PC printer
- EASYVIEW™: Image archive system
- Short cut knob for quick adjustment
- Auto IMT Function
- Super Needle Function

## Technical Specifications: BI PRO

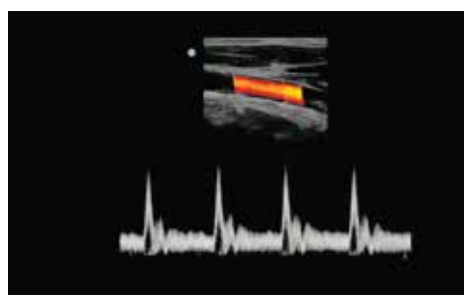
Display	12 inch High resolution colour LED	Image Storage	16GB high speed memory, (500GB hard disk optional)
Scanning Mode	Electronic convex / Electronic linear/ Electronic micro - convex / Electronic phased array	Image Processing	Speckle Reduction algorithm, Compound Imaging, Automatic/ Intelligent image optimization, Chroma, Full screen display, Zoom factor: 4 steps
Imaging Mode	B/M Mode, M Mode , 2B Mode ,4B Mode , B steer, CFM Mode, CPA Mode, DPD Mode, D(PW) Mode, B/BC Mode, Triplex Mode, CW Mode, TDI, Trapezoidal Mode, SuperNeedle	Clinical - Analysis Packages	Abdomen, Obstetric, Gynecology Cardiology, Vascular, LE Vein, LE Artery Urology, Small parts,Pediatrics, Ortho
Probe Connector	2 probe connectors	Standard - Configuration	2 probe connector, Full Screen Display Mode, i-image, Chroma, SRA, Compound imaging, Built-in Battery 3 USB ports, VGA port, Video port, LAN port
Probe Frequency	Working frequency 2.5 Mhz - 11 Mhz	Optional	DICOM, Carrying Case, Trolley, Supporting Inkjet Printer, Video Printer, Biopsy guide
Gain Control	Overall Gain Control, 8 - step TGC continuously adjustable	Connectivity	USB ports : left side 2, back 1, Ethernet port, Video out port, Remote port , VGA port, Foot switch port
Gray Scale	256 levels		
Cine Loop	256 frames		
Applications	Abdominal, Obstetrics, Gynaecology, Urology, Vascular Cardiology, Small Parts, Pediatrics, MSK, Nerve		
Image Depth	24 cm		



Fetal head, B Mode



Liver, B Mode



Carotid, PW Mode

### Broadband Probes

<p>■ C3-A Convex Probe 2.5 - 5.0 Mhz</p> 	<p>■ L7M-A Linear Probe 5.3 - 10.0 Mhz</p> 	<p>■ L7S-A Linear Probe 5.3 - 11.0 Mhz</p> 
<p>■ MC6-A Micro-Convex Probe 4.5 - 8.0 Mhz</p> 	<p>■ V6-A Transvaginal Probe 4.5 - 8.0 Mhz</p> 	<p>■ P 3-A Phased Array 2.5 - 4.5 Mhz</p> 

**AeroSCAN**  
Digital Ultrasound Imaging

#### KONICA MINOLTA HEALTHCARE INDIA PVT. LTD.

201, 2nd floor, 215 Atrium 2, Andheri (East), Mumbai - 400093, Maharashtra, INDIA.

Tel. : +91 - 22 - 61916900 | Fax: +91 - 22 - 61916996

Email: sales@mi.konicaminolta.in | Website: www.konicaminolta.com

**CALL TOLL FREE FOR SUPPORT : 1800 - 121 - 2313**

Monday to Saturday (10:00 am to 06:00 pm)