

### Affordable Quality, Increased Performance

- 15.6-inch LCD / LED medical grade monitor with high resolution and 180-degree open angle.
- Efficient Workflow with the 10.1-inch sensitive touch screen.
- Quick System Bootup
- Extremely light weight at 4.5Kgs, realizes the true portability.
- Digital Multi-Beam Forming Technology.
- PIH (Pulse Inversion Harmonic Imaging).
- eSRI (Speckle Reduction and Edge Enhancement Imaging).
- eView (Spatial and Frequency Compound Imaging).
- TAI (Tissue Adaptive Imaging).
- eBoost (Echo Enhancement Technology).
- eOptimized-One Key Optimization in B/Color/PW.
- eTouch-Efficient Swipe gesture control.
- PW Auto trace-Automatic measurement.
- First of its kind, 'Android' Operating System

## Digital Colour Doppler Ultrasound System





## Technical Specifications: : AEROSCAN CD10 PRO

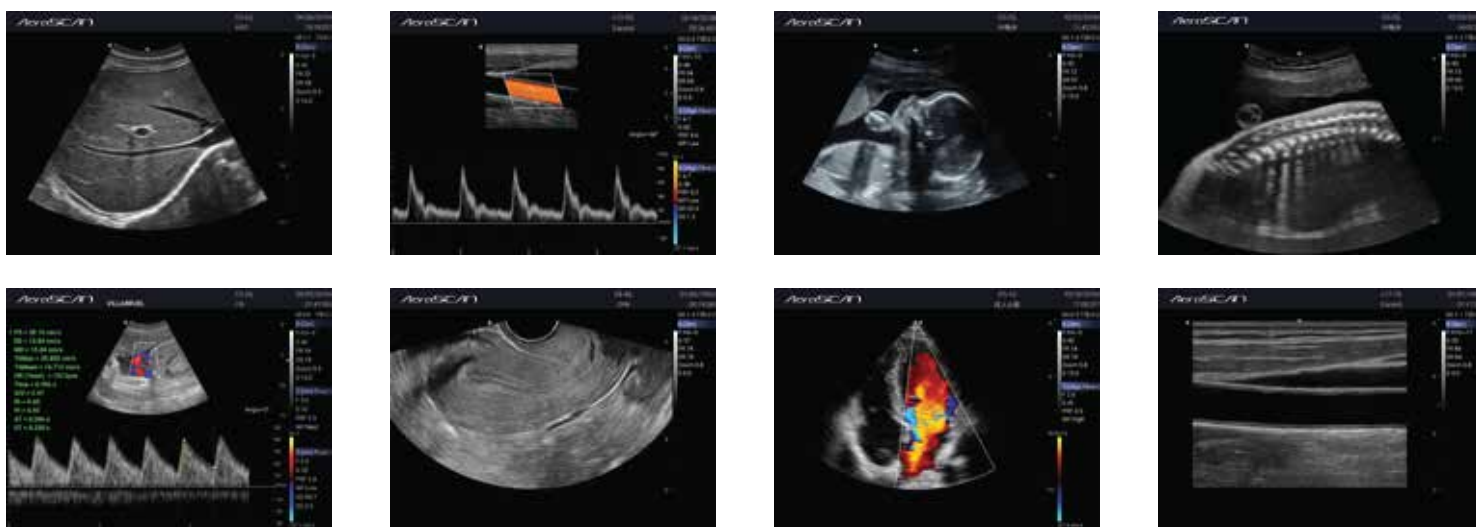
|                    |  |
|--------------------|--|
| Display            | 15.6-inch LCD / LED medical grade monitor with high resolution and 180-degree open angle.  |
| Touchscreen        | 10.1-inch sensitive Touch Screen   |
| Scanning Mode      | Electronic Convex / Linear / Phased Array  |
| Imaging Mode       | B-mode, M-mode, Colour Doppler, PDI/DPDI, PW Doppler, CW Doppler   |
| Probe Connector    | One / Two Probe Connectors   |
| Probe Frequency    | Frequency range of 1-17MHz   |
| Gain Control       | Overall Gain Control, 8 step TGC on Touchscreen  |
| Hard Drive         | 120G SSD   |
| Image Depth        | 1 to 45 cm   |
| Advance Technology | eSRI, eView, TAI, eBoost, eOptimized - One key optimization in B/Color/PW, eTouch - Efficient 'Swipe' gesture control, PW auto trace, Digital Zoom, Prospective / Retrospective Clip |
| Battery            | Continuous scanning upto 1hr. / 2hrs.  |
| Weight             | 4.5 kg, Lightweight magnesium alloy body   |
| Peripherals        | S-Video, USB 3.0, USB 2.0(two), HDMI, Ethernet   |
| Optional           | DICOM, additional battery  |



## Broadband Probes

|  |  |   |  |  |
|--|--|---|--|--|
| <b>C5-2Q</b><br>Convex Probe<br>2-5MHz  | <b>L12-5Q</b><br>Linear Probe<br>5-12MHz  | <b>L17-7Q</b><br>HF Linear Probe<br>7-17MHz  | <b>E8-4Q</b><br>Transvaginal Probe<br>4-8MHz  | <b>P5-1Q</b><br>Phased Array Probe<br>1-5MHz  |
|--|--|---|--|--|

## Clinical Images



**AeroSCAN**  
Digital Ultrasound Imaging

**KONICA MINOLTA HEALTHCARE INDIA PVT. LTD.**

201, 2nd floor, 215 Atrium 2, Andheri (East), Mumbai - 400093, Maharashtra, INDIA.

Tel. : +91 - 22 - 61916900 | Fax: +91 - 22 - 61916996

Email: [sales@mi.konicaminolta.in](mailto:sales@mi.konicaminolta.in) | Website: [www.konicaminolta.in/healthcare/](http://www.konicaminolta.in/healthcare/)

**CALL TOLL FREE FOR SUPPORT : 1800 - 121 - 2313**

Monday to Saturday (10:00 am to 06:00 pm)