

AeroSCAN
CD25

Imaging your imagination



Full **Digital** Technology

Ultra-Compact System with Excellent Vision

AeroScan CD 25 is designed with latest technology, providing the more preferred compact yet powerful ultrasound platform for every day Imaging challenges. The system is designed incorporating outstanding 2D image quality and high color sensitivity, the CD25 provides the imaging performance needed to address the unique concerns of OB/Gyn, General Imaging, Cardiovascular, Small Parts Urology applications delivering confidence across every application. Loaded with a host of must-have, useful functions and suite of extended applications, the CD 25 is capable of providing superior endovaginal imaging and best-in-class fetal imaging for both 2D and 3D / 4D acquisition.

Intuitive user interface and fast system response greatly improves workflow during daily scanning.



Auto Calculation: IMT, ▶
Auto IMT, PW Auto-trace,
and so on.

Quick Measurement: ▶
Shortcut Keys for
OB/GYN/Cardiology
measurement

Customized settings based ▶
on your own working style.

Full patient database and ▶
image management
solutions: AVI/JPG, 4 US
ports, DVD and PDF report
500G HDD storage
capacity.

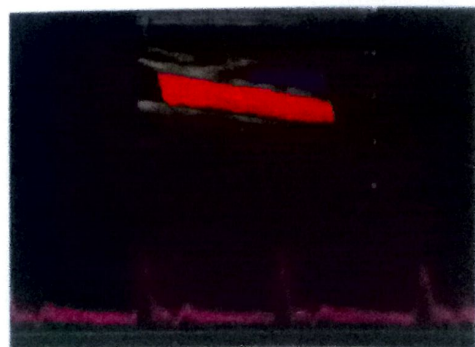
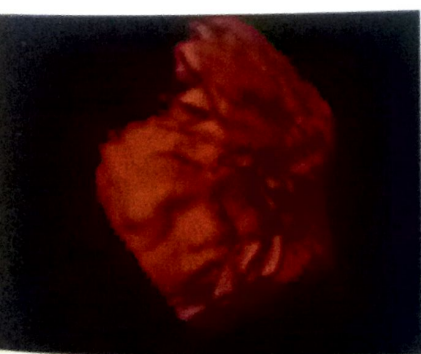
Complete DICOM system: ▶
Transmission, Store, Work
list, Print, MPPS, Commit.

◀ 17-inch high definition LCD / LED
monitor with articulating arm.

◀ 4 active transducer sockets
are available for a wide
range of applications

Convenient and Smooth Workflow







- Outstanding 2D image quality even under the Doppler and M-mode.
- M-tuning: One button automated image optimization for 2D, color and Doppler mode.
- Pulse Inversion Harmonic Imaging can not only increase the signal-to-noise ratio but also increase the penetration in the far field.
- Triplex: Help to capture the real-time information of the tissue with active B/Color/PW mode.
- u-Scan Imaging filtering technology for superior image performance through the minimization of noise and artifacts.
- Vivid 3D/4D acquisition, data rendering and post-processing functionality on all exams in 2D and Color Doppler.
- Multi-slice edit function to help easily analyze the internal structure of the fetus.
- High elements, convex probe to scan the fetal heart, performing deep penetration suitable for obstetrics examination.
- Streamlines the clinical reporting by automatically transferring patient and calculation data to DICOM compliant obstetrical and gynecologic reporting packages.
- Needle enhancement function, to help delineate needle location when performing interventions such as when used in nerve blocking.

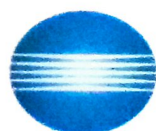


Technical Specifications: CD25

■ Imaging Mode	B, B/B, 4B, B/M, M, B/D, Color Doppler Imaging, Power Doppler Imaging, Directional Doppler, PW/ CW Doppler, THI, PIH (Pulse Inverse Harmonics), Real Time Dual, Duplex, Triplex, Color M, Steer M, Panoramic Imaging, TDI, 4D Imaging, Auto IMT Calculations
■ Scanning Mode	Electronic Convex / Linear / Phased Array/ volume
■ Gray Scale	256
■ Display	17" LCD / LED Display Monitor with visible angle 170°
■ Probe Frequency	2 - 16 Mhz (Probe dependent)
■ Probe Connector	4 live probe connectors + 1 Pencil Probe Connector
■ Gain Control	Overall Gain Control, 8 - Step TGC continuously adjustable
■ Image Reverse	Left/Right, Up/Down
■ Image Magnification	Upto 10X Smart zoom
■ Cine Loop	More than 1000 frames (Probe and Mode Dependent)
■ Image Storage	Minimum 500 GB Hard Disk for inbuilt Digital Image Storage, Inbuilt CD/DVD Drive
■ Connectivity	4X USB, LAN Networking, DICOM 3.0, S-Video, VGA, Video, Remote print
■ System Upgrade	Flexible System upgrade through software
■ Clinical Application	Abdominal, Vascular, Thyroid, Obs, Gyn, MSK, Adult/ Pediatric Cardiac, Urology, Pediatrics, Neonatal Head, Small parts, Transcranial etc
■ Probes	Convex / Linear / Micro Convex / Phased Array/ Trans Vaginal / Transrectal / Volume Convex
■ Optional	Volume probe, Surgical (Hockey Probe), Bi-Plane Rectal Probe, Contrast Imaging, Elastography, Needle Enhancement (VIS - Needle) for linear probe

Multi Frequency Broadband Probes

<p>■ SC 44-N Convex Probe 2 - 6 Mhz</p> 	<p>■ 4-16 MHZ Linear Probe 5 - 15 Mhz</p> 	<p>■ SP21 N Adult Phased Array Probe 2 - 4 Mhz</p> 
<p>■ SP51N Pediatric Phased Array Probe 4 - 8 Mhz</p> 	<p>■ 3-15 MHZ Trans Vaginal Probe 4 - 11 Mhz (135°)</p> 	<p>■ VC26 N Volume Convex Probe 2 - 6 Mhz</p> 



KONICA MINOLTA
Giving Shape to Ideas

Serviced & Marketed by:

KONICA MINOLTA HEALTHCARE INDIA PVT. LTD.

Office No. 201, 2nd floor, 215 Atrium II, Andheri (e), Mumbai - 400 093, INDIA
Tel. : +91 - 22 - 6191 69 00 Fax : +91 - 22 - 6191 69 96
sales@mi.konicaminolta.in | www.konicaminolta.com

CALL TOLL FREE FOR SUPPORT

1800 - 121 - 2313

Monday to Saturday (10:00 am to 06:00 pm)