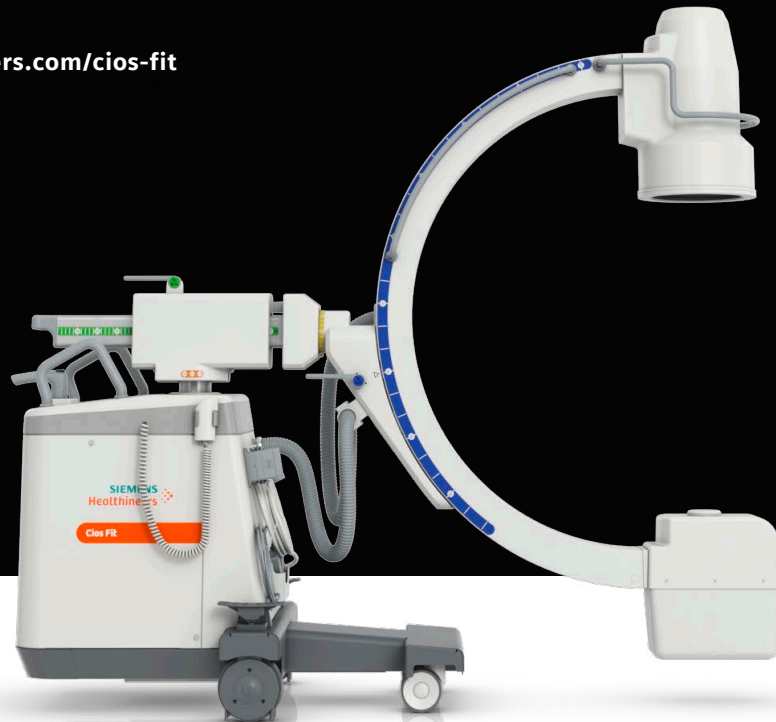


Cios Fit

# Fit for the tough job in the OR.

[siemens-healthineers.com/cios-fit](https://siemens-healthineers.com/cios-fit)

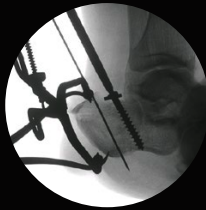


# Crystal-clear images

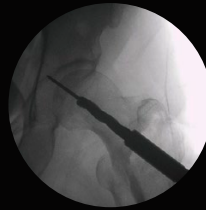
Cios Fit combines high resolution capabilities with dedicated X-ray presets per body region and high maximum average power – for crystal-clear images.



Thoracic spine



Calcaneus



Acetabulum



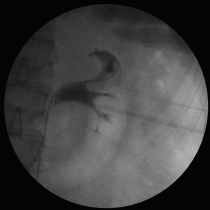
Distal tibia



Wrist



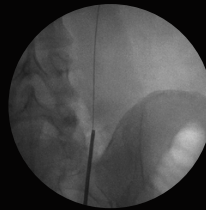
Proximal tibia



Pyelography



Bilateral DJ catheter



Catheter and guidewire



*“The amount of radiation is very, very low and the system is very safe for patients, surgeons and the OR staff.”*

*Dr. Nanjappa K. M. from Cauvery Uroderm Centre, Kalyan*

*Courtesy of Dr. Mukhi's Raj Hospital, India  
Courtesy of Goa Medical College, India*

# Cios Fit

## Fit for the tough job in the OR.

To help you tackle your daily challenges, we developed Cios Fit, a multidisciplinary mobile C-arm ready for demanding environments. Based on its built-to-last design, it features powerful state-of-the-art imaging technology and an intuitive touch-and-play concept. Cios Fit can help you improve quality of care, achieve consistent results and efficient workflows, and profit from high uptime to reduce avoidable costs.

**A system you can rely on – in your demanding OR.**



Orthopedic /  
orthopedic trauma



Spine



CMF  
Cranio-Maxillo-Facial



Pain management



Gastro



Urology

**Crystal-clear images thanks to our  
powerful imaging technology**



High quality images help surgeons to base their intraoperative decision on a clear view to anatomical structures, implants, screws and devices during surgical interventions.

**Simplicity in use thanks to the  
touch-and-play concept**



Smart usability, a consistent color-coding scheme, more working space and fast boot-up allow assisting personnel to operate the system with ease – for efficient workflows in daily routine.

**High uptime thanks to its  
built-to-last design**



For extra durability Cios Fit utilizes a shock resistant SD-card design in place of sensitive, conventional PC technology and features effective heat management for long-lasting imaging.

# Cios Fit

## Crystal-clear images

High visual resolution ( $> 2.2$  lp/mm)  
for a clear view to anatomical  
structures, implants, screws and  
devices

**Up to 37% more space\***  
in the C-arm geometry for  
easy patient positioning

## Smart power and dose options

Support imaging of regular,  
pediatric and obese patients

## Built-to-last design

Robust in tough daily use e.g. against collision,  
voltage fluctuation and overheating

\* Compared to mobile C-arms in market segment, data on file



### Simplicity in use

thanks to the touch-and-play concept



**One-touch organ programs,**  
easy selection by intuitive pictogram

### Waterproof footswitch

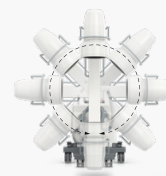
Satisfying IPX8 standard

**Fast boot-up,**  
in < 40 seconds

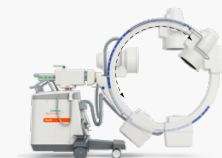
- Side-by-side display of live and reference images
- Image overview for postprocessing
- Smart touch user guidance at your fingertips
- 24" LED with high contrast, high luminance and HD resolution

### Easy system positioning

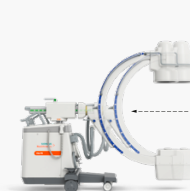
is supported by a wide range of movements of a fully counter-balanced C-arm



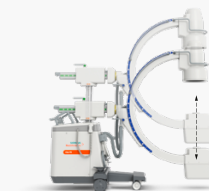
380° argulation



130° orbital rotation



20 cm horizontal movement



40 cm vertical travel (motorized)



25° swivel range

On account of certain regional limitations of sales rights and service availability, we cannot guarantee that all products included in this brochure are available through the Siemens Healthineers sales organization worldwide.

Availability and packaging may vary by country and is subject to change without prior notice. Some/All of the features and products described herein may not be available in the United States.

The information in this document contains general technical descriptions of specifications and options as well as standard and optional features which do not always have to be present in individual cases. Siemens Healthineers reserves the right to modify the design, packaging, specifications, and options described herein without prior notice. Please contact your local Siemens Healthineers sales representative for the most current information.

**Your sales partner:**



Note: Any technical data contained in this document may vary within defined tolerances. Original images always lose a certain amount of detail when reproduced. The products/features and/or service offerings (here mentioned) are not commercially available in all countries and/or for all modalities. If the services are not marketed in countries due to regulatory or other reasons, the service offering cannot be guaranteed.

The statements by Siemens Healthineers' customers described herein are based on results that were achieved in the customer's unique setting. Since there is no "typical" hospital and many variables exist (e.g., hospital size, case mix, level of IT adoption) there can be no guarantee that other customers will achieve the same results.

---

Please contact your local Siemens Healthineers organization for further details.

---

**Siemens Healthineers Headquarters**

Siemens Healthcare GmbH  
Henkestr. 127  
91052 Erlangen, Germany  
Phone: +49 9131 84-0  
siemens-healthineers.com