

MULTIX Impact E

**Essential X-ray imaging,  
made in India.**



# Introduction:

Around the globe, many patients still have limited access to quality digital X-ray imaging. MULTIX Impact E has been purposefully designed to improve access to care and to open new opportunities for digital imaging – for everyone, everywhere. The versatile, floor-mounted radiography system features all you need for easy, intuitive system operation, lets you detect anatomical details at low dose, and comes at an attractive price for every budget.

## Your access to digital imaging



Time to image

# Focus on quality imaging

Outdated equipment can lead to inefficient image acquisition and reading. MULTIX Impact E offers all the digital essentials you need for intuitive system operation, low-dose quality imaging, and confident reading – simply everywhere.

## Essential digital technologies

MULTIX Impact E provides all you need for an efficient and streamlined imaging procedure. It enables easy system preparation and scanning, offers a fast digital workflow from patient registration to image post-processing and documentation, and delivers high-quality images you can easily share with patients and peers.

## Smooth patient positioning

Featuring an ergonomically designed free-floating tabletop, the patient table allows you to smoothly transfer and position patients of all shapes and sizes. Thanks to its impressive longitudinal coverage, tall patients can be imaged with no need for repositioning. In addition, the Bucky wall stand<sup>1</sup> lets you scan patients in various positions.

## Easy and intuitive system handling

MULTIX Impact E is so easy to operate that you can focus on your patients and help them relax. You can quickly prepare the scan at the tube-mounted Touch User Interface (TUI)<sup>1</sup> and easily move the tube into the right position with the ergonomic handles. The Positioning Guide helps you get the image right the first time. And the imaging system offers an easy-to-understand visual logic that makes system operation highly intuitive.

## Safe and efficient patient scans

MULTIX Impact E offers many features that help reduce dose – including the dose-efficient CSI detector as well as optimized and preconfigured Organ Programs (OGPs). Also, you can select copper filters via a rotating pre-filter disk to absorb unnecessary radiation. And the grid can be removed to further reduce dose.



Intuitive user interface for easy scan preparation right at the system

# Acquire quality digital images at low dose with ease

## Easy image acquisition

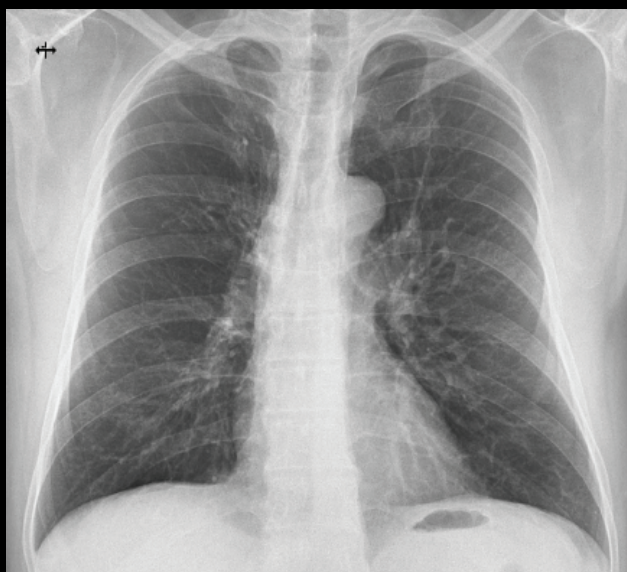
MULTIX Impact E comes with a full-size, wireless Core XL flat detector. It covers all your imaging needs and can be used in the table, Bucky wall stand, or for free exposures. The smart in-tray charging can speed up your digital workflow because the detector is always ready for use. In addition, the ergonomic design with handle allows you to safely transport the detector.

## Speed up imaging

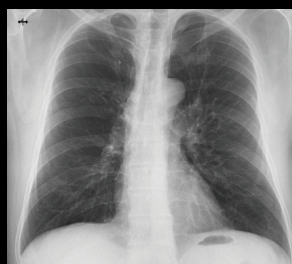
A selection of graphical Organ Programs (OGPs) simplifies examination preparation and speeds up your digital imaging workflow in daily routine. Simply select the organ you want to image with one click, and MULTIX Impact E automatically adjusts the imaging parameters and post-processing settings. This helps minimize errors and reduce dose. And dedicated pediatric organ programs allow you to further reduce dose for children.

## Images in your preferred flavor

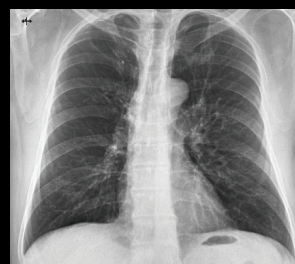
MULTIX Impact E lets you view clinical images in your preferred look and feel – for confident image reading.



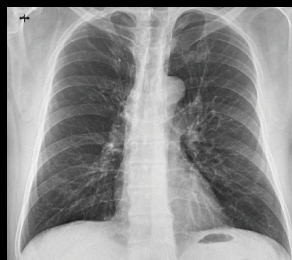
Standard image



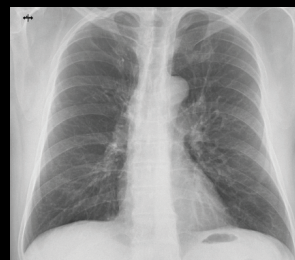
Flavor 1



Flavor 2



Flavor 3



Flavor 4

# Focus on economic value

Healthcare providers in India seek to get the most for their budget. MULTIX Impact E is a reliable investment that can help improve your revenue streams for the long run – with a trusted partner always by your side.



## Total Cost of Ownership

With MULTIX Impact E, you opt for trusted Siemens Healthineers quality at an attractive price – with low costs along the system lifecycle. For example, you can keep installation costs in check by using the existing power infrastructure.<sup>2</sup>



## Efficient online training

The intuitive-to-operate MULTIX Impact E keeps training effort and costs at optimum level. The comprehensive and engaging training material is available on our free-to-access PEPconnect<sup>1</sup> platform. Every participant will receive a certificate after finishing the mandatory training.



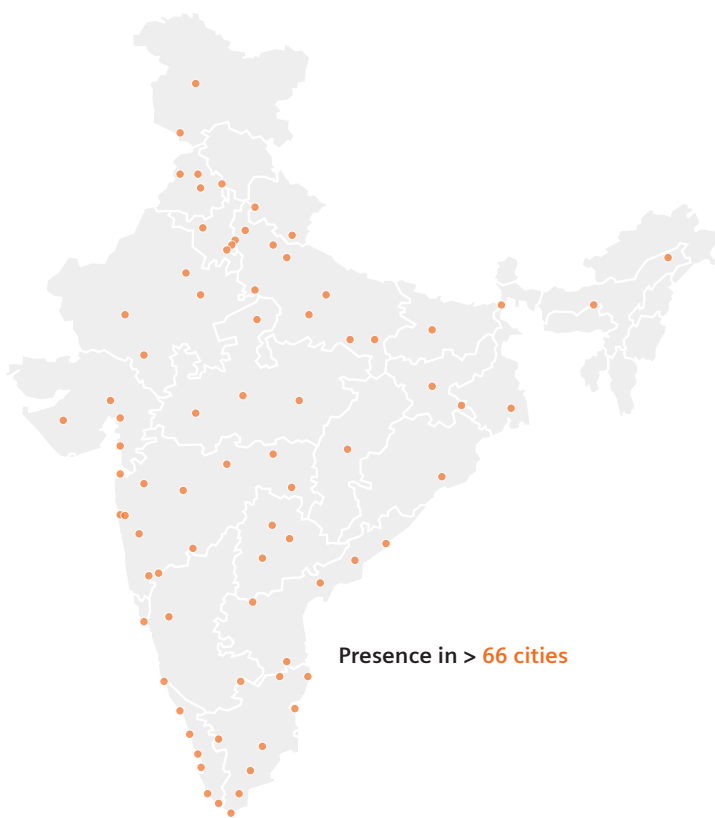
## Optimal service coverage, pan-India


To reliably deliver high patient care, you need reliable equipment. With our comprehensive service offerings, we keep your operations running – wherever you are. Our remote services keep system uptime high. In the long run, we ensure continued access to certified spare parts for your MULTIX Impact E.



# Focus on Service coverage

## Siemens Healthineers Customer Services at a glance



 Siemens Healthineers Customer Services in India



Digital advantage and connectivity to Customer Care Centre



Warehouses with **85%** availability of critical parts at any time. Worldwide distribution centres in Singapore, Germany and USA



**>230** Certified engineers and application specialists

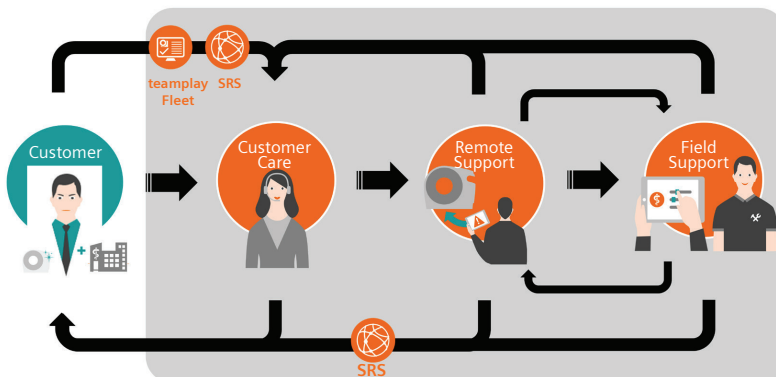


**>19,000** Education courses available on PEPconnect



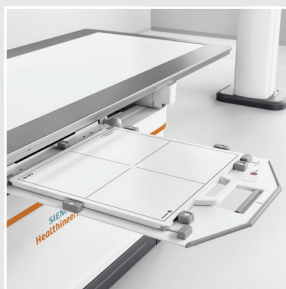
**Dedicated remote support** by technical experts in India, Germany, China, Singapore, Brazil and Dubai

## Digitalization is the crux of our Service Support



- Greater than 80% of our customers use our teamwork Fleet app for support requests
- Immediate First level support by remote service
- Our Advanced Alert System created 10000 PROA tickets in last one year and prevented unplanned downtime.
- Service team powered with PACE (Personal Assistant for Customer Enablement) enabling swift delivery of on-site services





#### Core XL detector

- Full-size 43 cm x 43 cm (17" x 17") wireless flat panel detector
- Dose-efficient CSI detector



#### X-Ray generator

- Maximum output: 50 kW / 630 mA
- Integrated into the table

# Technical specifications: MULTIX Impact E



## Bucky wall stand (BWS)

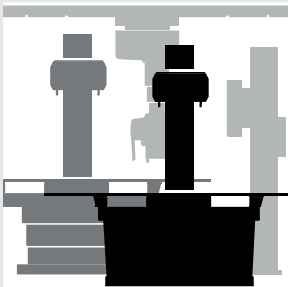
- Manual movement control
- In-tray detector charging
- Vertical travel range: from 31.5 cm up to 175 cm (12.4" up to 69")
- Low central beam height: 31.5 cm (12.4")

## Floor-mounted tube

- Manual positioning
- Rotatable Tubeside Control Module (TCM) displaying the digital SID to control system movements
- Manual collimator to precisely align patients to X-ray center beam
- Rotation range around vertical axis:  $\pm 90^\circ$
- Manual rotation around horizontal axis:  $\pm 140^\circ$

## Fixed table

- Tube-detector tracking
- In-tray detector charging
- Height: 70 cm (27.5")
- Weight capacity: 300 kg (661 lbs)
- Maximum longitudinal coverage: 190 cm (6.2 ft)
- Comfortable patient positioning on floating tabletop



MULTIX Impact E is a member of the trusted MULTIX Impact Family.

## Why Siemens Healthineers?

We pioneer breakthroughs in healthcare. For everyone. Everywhere. Sustainably. The innovative healthcare solutions offered are crucial for clinical decisionmaking and treatment pathways. We are a team of 66,000 highly dedicated employees across more than 70 countries passionately pushing the boundaries of what's possible in healthcare to help improve people's lives around the world.



On account of certain regional limitations of sales rights and service availability, we cannot guarantee that all products included in this leaflet are available through Siemens Healthcare Private Limited's sales organization. Availability and packaging may vary by country and are subject to change without prior notice. Some products/solutions are still under development and not commercially available yet. Their future availability cannot be ensured.

The information in this document contains general technical descriptions of specifications and optional features which do not always have to be present in individual cases. Siemens Healthcare Private Limited

reserves the right to modify the design, packaging, specifications, and options described herein without prior notice. Please contact your local Siemens Healthcare Private Limited sales representative for the most current information.

All rights reserved. No part of this document may be reproduced in any form or by any means without the prior written permission of Siemens Healthcare Private Limited.

Note: Any technical data contained in this document may vary with undefined tolerances. Original images always lose a certain amount of detail when reproduced.

<sup>1</sup> Option

<sup>2</sup> Internet connection required

---

Siemens Healthcare Private Limited  
Unit No. 9A, 9th Floor, North Tower, Godrej One,  
Pirojshanagar, Eastern Express Highway,  
Vikhroli East, Mumbai – 400 079, India  
Tel: +91 22 3370 0600 | Fax: +91 22 3370 0604  
E-mail: [hc\\_contact.india@siemens.com](mailto:hc_contact.india@siemens.com)  
Helpline for business queries: 1800 258 5828  
CIN: U74999MH2015PTC264859