

COMPACT, INNOVATIVE AND ULTRA MODERN

Smart Design

- 15" high resolution high definition monitor with tilt facility of 40° degree
- Standard 2 probe connectivity for ease of use.
- User Oriented Backlit Control panel
- Rechargeable Integrated battery

Outstanding Image

- Pulse Inversion Harmonics
- Multi Slice Element Scanning
- Micro Scan Imaging
- Spatial Compound Imaging
- M-Tuning i.e. one button optimization
- Unique 1.5D Element Probe Technology
- Temperature Detection Technology

Powerful Platform

- Real Time Panoramic
- Strain Elastography
- 4D Imaging
- VIS Needle Function
- Auto IMT Function
- Auto NT Function
- Auto EF Function

CD 15



Technical Specifications

Display	15" high resolution monitor with tilt facility of 40° degree
Scanning Mode	Electronic convex / Electronic linear/ Electronic micro - convex / Electronic phased array
Imaging Mode	B, B/M Mode, M Mode, THI/PHI, 2B Mode, 4B Mode, , B steer, CFM Mode, CPA Mode, DPD , Anatomical M , Colour M PW, CW,TDI, TDI+PW, TDI+M, Triplex Mode, Trapezoidal Mode
Probe Connector	Standard 2 probe connectors
Probe Frequency	Working frequency 1 Mhz–16 Mhz
Gain Control	Overall Gain Control, 8 - step TGC continuously adjustable, LGC
Gray Scale	256 levels
Cine Loop	100-2000 frames
Applications	Abdominal, Obstetrics, Gynaecology, Urology, Peripheral Vascular ,Cardiology, Small Parts, Paediatrics, MSK, Nerve
Image Depth	40 cm
Image Storage	500 GB (1 TB hard disk optional)
Standard Configuration	Chroma, Full screen display, Zoom factor: 0.8 – 10.00 steps, Built-in Battery
Optional	DICOM, Carrying Case, Trolley, Supporting Inkjet Printer, Video Printer, Biopsy guide, external DVD R/W Drive, ECG cable ,Transducer Extender
Connectivity	USB ports , Ethernet port, VGA port, Foot switch, Audio Out Port, Video/S-Video Port



Wide Application Transducers

SC3A
Convex Probe
1.0 - 7.0 Mhz

SL42N-15
Linear Probe
4.0 - 16.0 Mhz

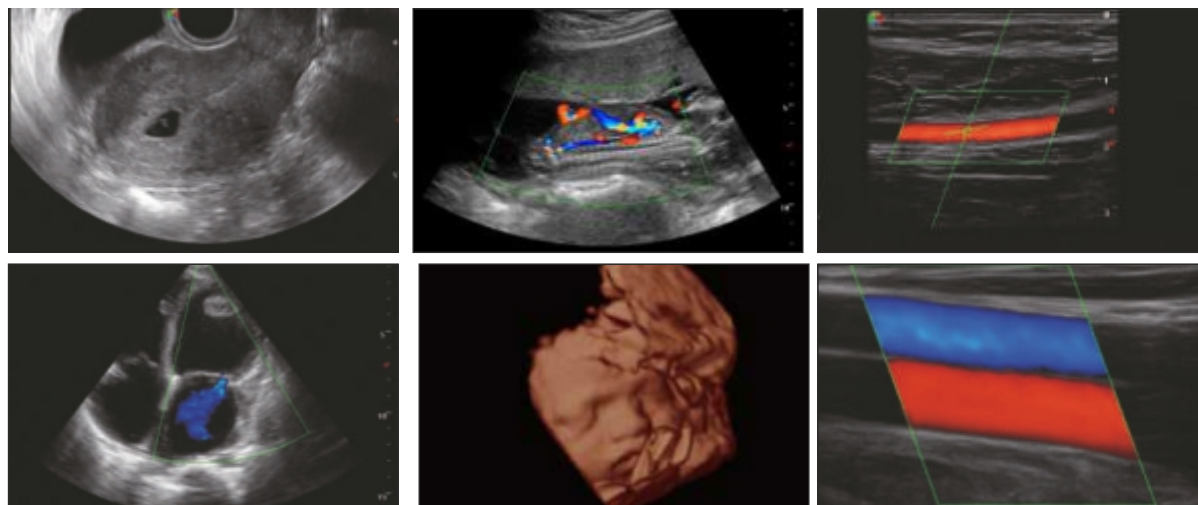
SV63N
Transvaginal Probe
3 - 15.0 Mhz

SP51-15
Phased Array
2.0 – 9.0 Mhz

2P2-15
Phased Array
1.0 – 6.0 Mhz

VC6-2-15
VOL.Convex Probe
2.0 - 7.0 Mhz

Clinical Image Gallery



Marketed & Service by :

KONICA MINOLTA HEALTHCARE INDIA PVT. LTD.

Office No. 201, 2nd floor, Atrium 2, Next to Hotel Courtyard Marriot, Andheri Kurla Road, Andheri East, Mumbai 400 093. | Tel.:91-22-61916900 | Email: sales@mi.konicaminolta.in
Website: www.konicaminolta.in/HEALTHCARE

AeroSCAN
Digital Ultrasound Imaging

CALL TOLL FREE FOR SUPPORT : 1800 - 121 - 2313

Monday to Saturday (10:00 am to 06:00 pm)